

BELLASERA

NEIGHBORHOOD NEWS

INSIDE THIS ISSUE

Page 1 - Always June

Page 2 - Clubhouse Corner

Page 3 - Bellasera Community
Events
Protect yourself on the
Internet

Page 4 - Notices & Weather

Page 5 - June Calendar

Page 6 - Protecting your Home,
and yourself, from Wild
land Fires

Page 7 - Pima-Dynamite Trail
head

Page 8 - Rear View

Page 9 - New Community
Residents
Bellasera Library

Page 10 - 12 - June in the
Garden

Page 13 - Classifieds

Page 14 - BCA Information

*"I wonder what it would be like to live in a
world where it was always June"*

L.M. Montgomery



June - 2021



Clubhouse Corner

The Annual Meeting of Bellasera homeowners will be on **Sunday, June 13 at 2:00 p.m.** at the clubhouse. This will be a hybrid meeting. Those able to attend in person are welcome on the clubhouse patio. The meeting will also be broadcast online via a Zoom webinar for those homeowners unable to attend in person. All homeowners will be provided an 'invitation' and specific log-in instructions via an e-blast in the week prior to June 13.

A Board meeting will follow at the conclusion of the Annual Meeting.

In Our 'Hood': City of Scottsdale has received a request for a 14-lot residential subdivision on a 17 acre site at the northwest corner of Scottsdale Road & Dixileta Drive.

Kudos Corner: A community *"thank you"* to resident **Annette Barnard**, who continues to brighten up our clubhouse bulletin boards with seasonal renderings.

Seres Update: **Larry & JoAnn Seres**, 10-year Bellasera residents until a year and a half ago, want friends here to know they're doing well. After renting here for a year and a half, they visited family in Illinois and now will be living there but still hoping to rent a place in Arizona for a couple months.

Editor's Note...

- Next month's newsletter will be a combined July-August issue. Normal monthly editions resume in September.
- What do you do (or did you do) for a living? Do you volunteer?

Knowing we have a wide range of talents in our community, the JUL-AUG newsletter will include a compilation of the responses.

Include your first name, initials, or (anonymously), as you wish.

Please e-mail your information to: **editor@azbellasera.org**.

Thank you in advance for your responses.

BELLASERA COMMUNITY EVENTS

Bellasera Yoga Continues: Outdoor Yoga on Saturdays at 9 a.m. continues. Zoom sessions also continue on Mondays and Thursdays at 9 a.m. Weekly video recordings of the classes are also being provided. If you are interested in being added to the Zoom invitation list, and/or would like to receive a weekly class recording, please contact **Joy, joy.blonstein@gmail.com**. Classes and recordings are \$7 per class. Yoga packages (10 classes for \$63) can also be purchased. Any remaining classes that you have already purchased may be applied to these classes.

Water Aerobics now begins at **10 a.m.** on **Monday, Wednesday** and **Friday**. Participants will be using both swim lanes from 10 to 11 a.m.

Pool Party: Will be Held at the Bellasera Community Pool on **Friday, June 18** at **6:00 p.m.** Bring your own food and drink. No glass please. If it's hot, bring your suits and cool off in the pool.

Our book club will be spending the summer reading and relaxing. We've chosen books we would like to read by Hemingway and Mark Twain and will discuss them when we meet in the Fall. *"The Magic Strings of Frankie Presto"* will also be discussed at that time. Happy Summer! **Karen, kkmooore40@yahoo.com**.

Protect yourself on the internet – keep your browsers up to date. For your safety when using the internet, you should always run the latest version of your chosen browser. Here are some reasons why you should update your default browser today:

- Better security. A compromised web browser could make your personal information public. Vulnerable browsers may also facilitate the download of spyware that can capture passwords, credit card numbers and screenshots to pass along to hackers. Updating your browser provides protection against these types of threats.
- Better website compatibility. Websites using new technology will look as they should and work better. Often older browsers will not function properly on modern websites and will not be able to display parts of the website. It is not uncommon for sites like your bank, sites where you pay bills or even Facebook and Gmail to turn away visitors on older browsers.
- Faster speed. Every newer generation of a browser improves the speed at which you can use the internet – loading websites you visit faster and making the tasks you carry out on those websites faster too.

Updating is easy, takes just a few minutes and is free. Some web browsers have an auto-update feature enabled by default. Go to your browser settings and select "about" and it should show you the current version and tell you if it is the most up-to-date version.

Meeting Notices

Annual Meeting will be on **Sunday, June 13 at 2:00 p.m.** at the clubhouse. Board meeting to follow.

Budget & Finance Committee is **TBA**

Building & Grounds Committee will meet on **Tuesday, June 8 at 10 a.m.**

Communications Committee will meet on **Wednesday, September 15 at 8:30 a.m.**

Modifications Committee will meet on **Tuesday, June 8 at 12:30 p.m.**. Applications must be received in the Community Manager's office no later than **Thursday, June 3 at 12 noon.**

May Weather in Bellasera

(May 1 - May 31)

Highest Temperature: **99** degrees

Lowest temperature: **49** degrees

Rainfall: **0.07** inch

Rainfall this year: **3.02** inches

Bellasera weather 24/7/365: **weather.azbellasera.org**

Our windy & cool spring continues, no 100 degree days yet this year.

Bellasera Weather at a Touch: A free app for your iPhone, iPad only. Provides instant Bellasera weather information at a touch. This app is available in the Apple App Store or Google Play. In the App Store or Google Play, search for "PWS Monitor" (no quotation marks). Install the free app.

Touch the gear icon at the lower left of your display.

The Settings screen will appear. Touch "Enter A Known Station ID"

Enter "KAZSCOTT79"

Touch OK.

That's it. More information, if required, is available by e-mail, editor@azbellasera.org

Newsletter Copy Deadline

If you have classified ads, meeting dates, or articles for publication, please e-mail to **editor@azbellasera.org**, or turn them in to the Association office no later than the **20th** of the month. The monthly newsletter is produced by the Communications Committee. The editor is **Keith Christian, 480-382-9310.**

Neither the Bellasera Community Association nor its Board of Directors provides any warranty, express or implied, as to the accuracy, timeliness, completeness, merchantability, or fitness for any particular purpose, of any information contained in this newsletter in any form or manner whatsoever.

City of Scottsdale Brush & Bulk Collection

The City of Scottsdale will pick up brush and bulk items in the Bellasera community during the week of **Monday, June 28**, with the next pickup the week of **Monday, August 2**. Brush and bulk items to be picked up should be at curbside by **5 a.m.** at the start of the week and not before the previous Friday. It will be removed during the week. **Remember, here in Bellasera, items cannot be put out prior to Friday of the previous week.** For more information, contact Solid Waste Management, **480-312-5600.**

June 2021

Bellasera Community Calendar

Sunday	Monday	Tuesday	Wednesday	Thursday	Friday	Saturday
		¹ Poker - 7 pm	² Pickelball Open Play - 8 am Water Aerobics - 10 am	³ Zoom Yoga - 9 am	⁴ Water Aerobics - 10 am	⁵ Pickelball Open Play - 8 am Outdoor Yoga - 9 am
⁶	⁷ Zoom Yoga - 9 am Water Aerobics - 10 am	⁸ Poker - 7 pm Building & Grounds - 10 am Modifications - 12;30 pm	⁹ Pickelball Open Play - 8 am Water Aerobics - 10 am	¹⁰ Zoom Yoga - 9 am	¹¹ Water Aerobics - 10 am	¹² Pickelball Open Play - 8 am Outdoor Yoga - 9 am
¹³ <i>Annual Meeting</i> 2:00 p.m.	¹⁴ Zoom Yoga - 9 am Water Aerobics - 10 am 	¹⁵ Poker - 7 pm	¹⁶ Pickelball Open Play - 8 am Water Aerobics - 10 am	¹⁷ Zoom Yoga - 9 am	¹⁸ Water Aerobics - 10 am Pool Party - 6 pm	¹⁹ Pickelball Open Play - 8 am Outdoor Yoga - 9 am
²⁰ 	²¹ Zoom Yoga - 9 am Water Aerobics - 10 am	²² Poker - 7 pm	²³ Pickelball Open Play - 8 am Water Aerobics - 10 am	²⁴ Zoom Yoga - 9 am	²⁵ Water Aerobics - 10 am	²⁶ Pickelball Open Play - 8 am Outdoor Yoga - 9 am
²⁷	²⁸ Zoom Yoga - 9 am Water Aerobics - 10 am	²⁹ Poker - 7 pm	³⁰ Pickelball Open Play - 8 am Water Aerobics - 10 am			
Bulk Pick-up Week						

Protecting your Home, and Yourself, from Wildland Fires

This information was printed in the July/August 2019 edition of the Bellasera Neighborhood News and is being reprinted to inform our residents of what they can do to protect their homes and themselves in case of a wildfire. Be safe in our very dry conditions.



As a property owner, you are the first line of defense against a wildland fire meaning that you should take steps to provide a “defensible space” around your home. With our desert landscaping, much of that has already been accomplished, however there may be things that still need to be done. Consider these suggestions.

- Trim or thin out the head of trees to reduce the amount of fuel. If your trees overhang the NAOS area or your roof, they should be trimmed so they do not overhang these areas. Also trim shubbery away from your home. If shrubs catch fire, they can start your home on fire.
- Bellasera homes do not have open eaves that could catch embers during a fire and they also have non-combustable roofs. This is a good thing, but check to make sure you don’t have a build-up of leaves or debris on your roof or in rain gutters.
- Make sure your windows are in good condition. Double paned windows can stop a fire from breaking the glass and then entering your home.
- If there is a fire in Bellasera, cushions on patio furniture can catch fire. Move them into your home. If the furniture is wood or any material other than metal, move them away from the structure.
- Remove ladder fuels to create a separation between low-level vegetation and tree branches to keep fire from climbing trees.
- DO NOT store any combustible materials next to your home.

In case you must evacuate your home, remember these important tips:

- Consider a “Go-Kit” with perscription medication, emergency supplies, important documents, and other essential items.
- If you don’t have a “Go-Kit” take important papers. You should already have them in a place where you can quickly access them.
- Don’t forget your medications. Again, have them in a place where you can quickly access them.
- Don’t forget your pets. Have a carrying cage ready and any medication your pet may need. They will be frightened so be gentle with them.
- Have your evacuation plan already figured out. How will you leave the community and where will you go. These are important things to consider.

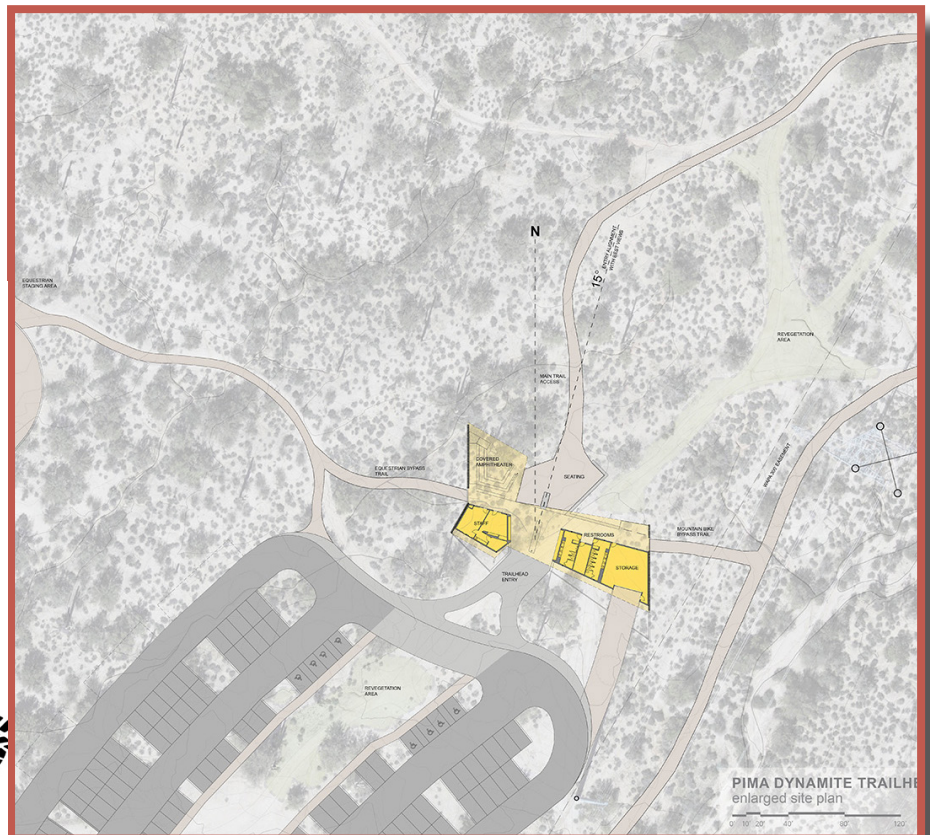
Once again, you are the first line of defense against a wildfire. As we have witnessed many times across our country, wildfires can strike quickly and with devastating results. Be prepared and be fire safe.

Pima-Dynamite Trailhead



The last of the planned facilities in Scottsdale's trailhead master plan is under construction near Pima Road and Dynamite Boulevard. With estimated completion this summer, the trailhead will include equestrian facilities, restrooms and 200 parking spaces. It will provide access to the northern region of the preserve, which includes more than 225 miles of trails.

The funding for this project was approved by voters in 2004 and the contract for the construction was awarded to Path Construction Company in 2020. The cost of construction is \$5,632,312.95.



REAR VIEW - A HISTORY OF BELLASERA

JUNE 2006: For those of you getting the printed version of the Bellasera Neighborhood News (BNN), you'll notice a new format. It's four double-sided, letter size pages, delivered inside an envelope. This is being done for two reasons: decreased turnaround time from submission to mailing, and to save about \$50 per month in distribution cost.

Significant progress has been made in regards to the health hazard in the clubhouse. All test samples came back negative, which means the mold concern has been eradicated. We reopened the steam rooms on 5/15. Thanks to all of those who regularly use the steam rooms for all your patience. The Jacuzzi/spa area also was repaired and refurbished and now we are happy to say up and running for the community.

A Safeway Service Station is proposed near the north entrance to the Summit Shopping Center. A little further north, on the southeast corner of Scottsdale & Dove Valley Roads (south of Winfield), preliminary plans are for a community of 120 luxury town homes.

JUNE 2011: After considerable research and meetings with specialists in the field, it's our conclusion that the most effective approach to roof tile replacement in Bellasera would be to rely upon Diversified Roofing. Diversified was the original installer of roof tiles for all of the homes in Bellasera. They have a data base which can be accessed by using your address and/or lot number which will tell them the style and color of your original roof tiles.

The Board has reluctantly accepted the resignation of Board Member Anne Chernis, effective June 7, 2011. Anne and husband Morrie have sold their Bellasera home and are moving to downtown Scottsdale. During Anne's time in our community, she has served on the Activities Committee, Modifications Committee and Board of Directors. She will be greatly missed by her Bellasera friends and the Association.

Sometimes our homeowners choose to enter the community through the visitors' side of the front gate and are annoyed when the gate attendant delays their entry by logging them in. Our security system requires that ALL vehicles entering the visitors' side be logged in before the gate can be opened. Please be respectful of our hard-working staff who are just doing their job.

JUNE 2016: The two Bellasera Tennis Courts may now be reserved on-line. Players wishing to do so must first set up an account at tennis.azbellasera.org. Use the link Create an Account to set up your account. Courts 1 & 2 can be reserved for only one week in advance.

Our May Potluck Dinner was graciously hosted by JoAnn and Larry Seres. They brought out the Spirit of Memorial Day for 15 residents who thoroughly enjoyed the sparkling beverages, great food and friendly conversations. On June 10, our hosts will be Sandra and Carlton Rooks. Be sure to sign up early, bring your favorite beverage, a dish to share with 12, and be prepared for a fun evening.

We have recently been advised that our on-site Office Administrator, Sharon Foxworth, will be leaving Bellasera and moving to Texas with her husband. Sharon has been a loyal and capable member of the Bellasera management team and will be missed. We wish Sharon well.

Repair and refurbishing of our two tennis courts is now scheduled to begin on Tuesday, July 5 and should be completed by the end of July, weather permitting. Both courts will be out of service during this time and the on-line tennis reservation system will be disabled during construction. We will be sending out another reminder as we get closer to the start date for this project.

NEW COMMUNITY RESIDENTS

Dennis & Illean Weber moved in January to their new home in Bellasera on Visao Drive. **Illean** is a licensed realtor in Minnesota and Wisconsin. She likes to play mahjong, walking, traveling and playing with fused glass.

The couple was attracted to Bellasera by the security, and a great vibe in the neighborhood.

Jordy & Buni Berger moved to their home on Balao Drive in Bellasera in April of this year from The Villages at Aviano in Phoenix, where they had a second home for 15 years. During the rest of the year the couple lives in Deerfield, Illinois, a northern suburb of Chicago. Their daughter and her family moved to Phoenix about 17 years ago and they purchased a condo to be near them.

Buni is a teacher and has been substituting in Deerfield for 30+ years. **Jordy** is a CPA and attorney specializing in estate planning and is currently working for a large independent insurance brokerage firm in Chicago.

The **Bergers** both enjoy golf, hiking and canasta. **Buni** plays Mahjong. **Jordy** enjoys woodworking.

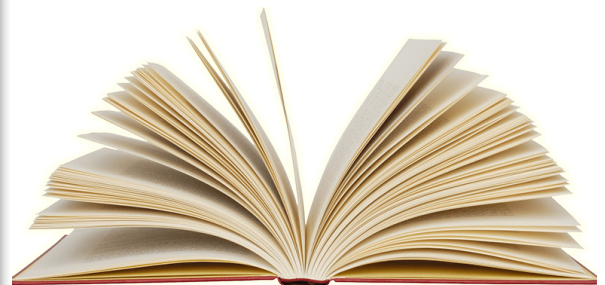
The reasons they chose Bellasera: location, the mountains and an attractive community with great amenities.

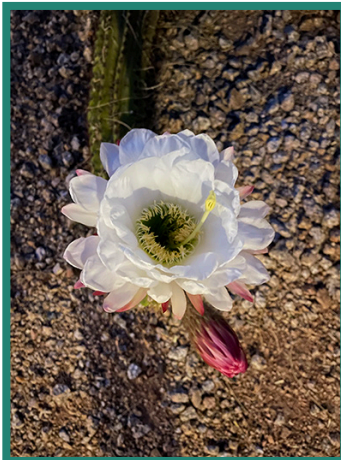
BELLASERA LIBRARY



Thank you for all the generous donations to our clubhouse "Library"... and to all of you who use it. And a special thanks to those folks who kindly figured out where to "reshelve" books (it's not easy getting down on your knees to reach those lower cabinet areas). As your unofficial "winter" librarian, I'll be off to Colorado soon ... and will miss my daily "tidying up" duties. It was always exciting to see what new books had arrived. See you in September, **Lena Junker**

{P.S. Someone just donated a wonderful "**Lee Child**" collection for us to enjoy...}





June In the Garden

by Joe McDade

Time To Prepare.....Summer Is Lurking!

The weather in May is traditionally an introduction to summer with some warm weather to get you and your garden prepared for the hot weather that lies ahead. Last May gave us a rather toasty introduction while May 2019 provided the opposite with temperatures well below normal along with rain. This year we got a combination, warm spells along with some spectacular weather.

One thing is certain, June is famously hot and dry and usually without a drop of moisture. So, in caring for your garden this month, let's think about the challenges presented by our hot weather and the tasks you need to perform to get a good start in coping with the summer months ahead. I've outlined them below.

Prepare and Protect Your Garden

With the onset of June, plants must endure the intense heat throughout the day. Many native and desert-adapted plants have numerous adaptations that enable them to live successfully in the desert, such as succulence, drought-deciduousness and small leaves, to name a few examples. However, you must provide proper irrigation to your plants during the summer months as well as being on the lookout for signs of water stress such as wilting, curling leaves, yellowing or falling of older leaves, and dead stems or branches. Some **Watering Guidelines** are below as well as some **Planting Suggestions** as well as **Summer Tasks**.

Watering Guidelines

Always the number #1 challenge, proper irrigation to your plants is crucial during the summer months, especially June, as it is normally the driest month of the year. As the temperatures rise, plant watering needs will also increase. Now is the time to **adjust your watering schedule for the summer**.

Watering guidelines can be complicated as the amount of water and watering frequency depends on many factors such as:

- Soil Type
- Weather (temperature, humidity, rainfall, etc.)
- Microclimate
- Plant Size and Species
- Newly planted or established in the landscape (two years or more)

There is no simple answer, but let's go with our reliable, **simple guidelines**:

How Much?

Ensure that you are deep watering your landscape plants to prevent salt build-up.

Use a soil probe or a long-handled screw-driver to determine how deeply water is penetrating.

A simple guideline is the **1-2-3 Rule**:

1 foot deep for small, shallow rooted plants.

2 feet deep for shrubs.

3 feet deep for trees.

How Often?

An often asked question and, in addition to the irrigation guidelines below, it is important to take into consideration weather, soil conditions, plant maturity and how well the plant has adapted to the desert. **Remember**- let soil dry between watering's.

7-21 days - Desert-adapted trees

7-14 days - Non-Desert adapted trees

7-21 days - Desert shrubs

5-7 days - Non-Desert adapted shrubs

Other considerations:

- Recently planted **native or desert-adapted trees** should be watered once a week if temperatures are over 100 degrees. If temperatures are over 108 degrees water every 2-3 days.
- Natural rainfall may be adequate for most well-established cacti and succulents. However, if rainfall is insufficient; water may be needed at least once for cactus and twice for succulents during the month of June. Always allow soil to dry out between each irrigation cycle. Water your cacti and succulents to a depth of at least 8-12 inches.

Ineffective water management is the number one cause of death of landscape plants in the Valley, and, believe it or not, it is more frequently from over watering than under watering. You can reduce your water bill and take better care of your plants if you water **slowly** (prevents run off), **deeply** and **infrequently** (let the soil dry between watering).

Monitor for Heat Stress

As mentioned above, in addition to providing proper irrigation to your plants during the summer months, observe plants regularly for signs of water stress. You need to occasionally walk around your property to look for those signs which include: *wilting, curling leaves, yellowing or falling of older leaves, and dead stems or branches*. Some plants with larger leaves like Sacred Datura and Queen's Wreath will often wilt during the hottest part of the day, but by next morning they usually recover. However, if they do not recover by the following morning, it is a good indication they need to be watered.

What to Plant

The ideal time for planting is fall or spring. However, here in the Sonoran Desert, a month never goes by without there being an opportunity to plant something. So, for June, an ideal candidate to consider are **herbs, warm- season vines, native and desert-adapted trees** and, as always, **warm season veggies**. Warning: if you have a need to plant during the summer months, watering may need to be more frequent and you must be diligent about observing your newly planted plants for signs of water stress.

Herbs

You'll find a good variety at all of the grocery stores in small pots and inexpensive (\$3-\$4). You should consider:

- Oregano
- Thyme
- Mint
- Parsley
- Sage
- Basil

You can transplant them to larger pots where they are easily maintained. If you like, set them on the ground and hook them up to your drip system. Fresh herbs grown and maintained by you are far superior to those found in local grocery store. For **Rosemary**, I would recommend planting in the ground as they do very well here in Bellasera.

Warm-Season Vines

Many varieties (e.g. **Yellow Orchid-vine, Queen's Wreath, Yellow Morning Glory-vine**) can be planted during the summer months. Water immediately after planting and monitor the moisture for the next few days to keep the root ball from drying out. Water newly planted native and desert-adapted vines twice to three times weekly to a depth of at least a foot. Gradually extend the time between watering and monitor plants regularly for signs of water stress.

Warm-Season Veggies (Heat-Loving Edibles)

Sow seeds for Armenian cucumbers, basil, black-eyed peas, cantaloupe and okra.

Transplant sweet potato slips; lush sweet potato foliage produces pretty flowers and spreads widely, like a groundcover in the garden.

Native and Desert-Adapted Trees

After planting your trees, they should be watered immediately and the moisture monitored for the next few days to keep the root ball from drying out. Newly planted native and desert-adapted trees may need to be watered more frequently until established. It can take up to 3-5 years for trees to become established in the landscape.

Summer Tasks

Mulch- Add a 3-inch layer of organic mulch (compost, dried leaves, grass clippings, wood chips) to the soil around plants to prevent weeds, maintain moisture, and slightly lower soil temperature. As the mulch decomposes, it adds nutrients to the soil.

Roses- To maintain healthy roses through the hot summer consider the following.

- Cut back on fertilizing established roses to encourage plants to slow down for the hot summer.
- Water deeply as temperatures climb.
- Hose off plants in the early morning to increase humidity and control spider mites. Prevent **Chlorosis-**

This is caused by an Iron deficiency which is typified by yellow leaves with contrasting green veins. Apply a chelated iron product to the soil around the root zone, following the package instructions

Fertilization- It is best not to fertilize this month as the tender new growth may burn quickly in the heat of early summer. If you choose to fertilize, do so only once at half strength. Fertilizers, especially inorganic ones, are high in salts that can accumulate quickly in the dry, hot conditions of summer.

Remember! Summer Solstice- Sunday, June 20, at 8:32 P.M. marks the onset of summer at the time of the longest day of the year. This occurs when the sun reaches its highest position in the sky.

Ironwood Tree

One of the largest and longest-lived Sonoran Desert plants is putting on quite a show this year with its lavender-pink blossoms that you cannot miss. The Ironwood tree found only in the Sonoran Desert can reach 45 feet in height and easily live for hundreds of years.

The Ironwood is known as a "nurse plant". It provides a safe place for seed germination, and protects seedlings from extreme cold. It also protects saplings from the damaging effects of the sun. Thorny, low-hanging branches shelter young saguaro. The wood of the Ironwood is one of the hardest and heaviest woods in the world and is considered to be non-biodegradable. We have many examples of these very old trees (>150 years) throughout Bellasera, especially in our washes. The abundant flowers and fruit on display this year only happens once or twice per decade.



Monsoon

Arizona's monsoon season could go either way this year. It's too soon to tell whether the state will experience a particularly drier- or wetter-than-average season, according to National Weather Service.

* * *

(If you have a gardening question, please contact the Maricopa County Cooperative Extension Service at 602-470-8086)

Introducing Desert Dwellers Home Watching Services exclusively serving Bellasera residents. Owned and operated by year-round Bellasera residents, we are dedicated to ensuring our neighbors have access to reliable and trustworthy home monitoring. Licensed and insured we provide visual inspections of the interior and exterior of your home. For a complete list of services and to schedule a complimentary assessment contact us at **480-634-1452** or e-mail, **ddhomewatch@gmail.com**.

Have you considered how automated sun screens on your patio will extend your outdoor living experience? My company, Array Shutters & Blinds, offers automated patio shades. plus a full line of custom shutters, and Hunter Douglas products. As a Bellasera homeowner, you will receive a Friends and Family Discount. **Mike Alldredge, 602-677-2779.**

I collect old stock and bond certificates. If you have any that you are willing to give away or sell I would be interested in speaking with you and possibly making an offer. Also happy to give you a strictly amateur estimate of value. E-mail inquiries only please, **fordsimm@gmail**.

All new or renewal classified ads must be 75 words or less. Ads will run for 3 months and may be renewed upon request. Editor reserves the right to edit all ads submitted. Send yours to: **editor@azbellasera.org**



Photograph by Sandy Simmons



Bellasera Community Association

**7350 E Ponte Bella Drive
Scottsdale, AZ 85266-2701**

Office: 480-488-0400

Security/Front Gate: 480-488-3663

M-F: 6 a.m. - 10 p.m.: Sat: 6:30- a.m. - 6:30 p.m.: Sun: 7 a.m. - 5 p.m.

Web Site: azbellasera.org

Weather: weather.azbellasera.org

Community Directory: directory.azbellasera.org

Community Manager: Pamela Nunnelly (manager@azbellasera.org)

Questions regarding your account?

Contact AAM, LLC: 602-957-9191 or toll free, 866-354-0257

AAM, LLC (after hours, emergency): 602-957-9191 or toll free, 866-553-8290

Bellasera Community Volunteers

Volunteers don't get paid, not because they're worthless, but because they're priceless

Interested in volunteering? Go to azbellasera.org, "BCA Members" page

Board of Directors

board@azbellasera.org

President - Richard Hoffman

Vice President - Joe Carlon

Secretary - Dennis Soeffner

Treasurer - Jim Ragborg

Director at Large - Vacant

Committees

Budget & Finance - (bandf@azbellasera.org) James Derks, Audrey Fischer, Mary Moore-Chair, Jim Ragborg, Chuck Roach, Charles Schroeder, Paul Snyder

Buildings & Grounds - (bandg@azbellasera.org) Jeanne Horvath, John Nielsen, Tom Saari-chair, Tom Shannon, Dennis Soeffner, Bruce Van Cleave

Communications - (comm@azbellasera.org) Keith Christian-Chair, Richard Hoffman, Joe McDade, Carol Padwe, Paul Rippens

Modifications - (mod@azbellasera.org) Joe Carlon-Chair, Stanley Green, Craig Johnson, Cheri Valuet

Security Advisory - (sec@azbellasera.org) Joe Carlon

Wildfire Safety Advisor - Paul Rippens